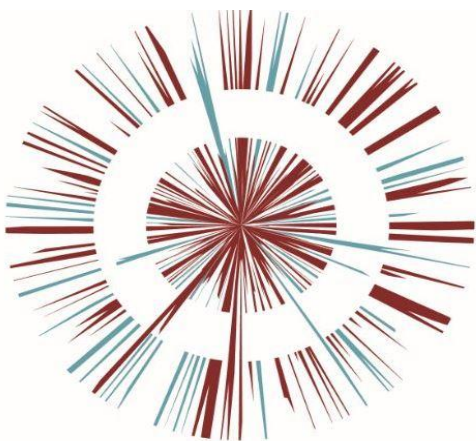




# OMEGA ZONE 8, ST HELENS

Omega St Helens Ltd / T. J. Morris Limited



Document Title  
ES Vol. 2 Appendix 9.13 Water Vole  
Survey Location and Results  
Document No. OPP DOC.11.22k

## Appendix 13. Water Vole Survey Location and Results

### WATER VOLE SURVEY

**SITE:** Omega Zone 8, St Helens

**WEATHER:** All surveys in dry, bright conditions

**DATE:** 10 May, 17 May, 25 May, 7 June, 25 June, 26 June, 27 June

**Table 1:** Water vole survey results




SECTION	Field Sign	Plant species in feeding remains / Comments
<b>Pond 1</b>	<b>None</b>	(no access granted due to crops). Previous notes indicated lack of ground vegetation around pond. Alder and oak trees present at banks, a small area of rushes located on south eastern bank. Otherwise poor suitability
<b>Pond 4</b>	<b>None</b>	Alder, ash surrounding pond. Grey willow and sycamore within pond. Himalayan balsam present. Limited burrowing opportunity and limited food plants present. Poor suitability.
<b>Pond A</b>	<b>None</b>	Shallow – flat earth banks. Some rushes and grasses present although generally sparse. Quite poor suitability overall, although better in isolated places. No field signs observed.
<b>Pond B</b>	<b>Rat droppings / burrow</b>	Shallow earth banks with limited ground flora/food plants present. Vegetation present at bank tops. Rat droppings and burrow near pond edge.
<b>Pond C</b>	<b>None</b>	Poor suitability owing to overshadowing and very limited ground flora/food plant opportunity
<b>Pond D</b>	<b>None</b>	Inaccessible due to crop in field. Pond is isolated.
<b>Pond G</b>	<b>None</b>	Poor suitability owing to overshadowing and very limited ground flora/food plant opportunity, with grasses locally present.
<b>Pond H</b>	<b>None</b>	Poor suitability owing to overshadowing and limited ground flora/food plant opportunity. Some rushes present on eastern bank. No mammal signs observed. Earth banks steep to west and near flat to east.
<b>Pond I</b>	<b>None</b>	Shallow – flat earth banks. Heavy overshadowing by trees. No suitable food plants present.
<b>Pond K</b>	<b>None</b>	Moderately-steep earth banks to east, flat ground to west. Dense soft rush on eastern bank, some rushes on west bank.
<b>Pond Ki</b>	<b>Rat droppings</b>	Some shallow-moderate earth banks. Flat banks to south. Improved grassland at bank tops. Rat droppings noted within grain dropped by farmer on southern bank.
<b>Pond S</b>	<b>None</b>	Shallow to flat earth banks. Some limited grassland at tops of eastern bank, although generally heavily shaded by trees. Generally poor suitability

<b>SECTION</b>	<b>Field Sign</b>	<b>Plant species in feeding remains / Comments</b>
<b>Pond X</b>	<b>Likely rat burrows</b>	Flat ground surrounding pond. Heavy use by mallards and some Canada geese. Fox kills and eaten eggs near to pond within grass. Poor suitability for water vole. Likely rat burrows noted near pedunculate oak, although water has altered shape of burrows making them larger.
<b>Pond Z</b>	<b>None</b>	Heavily overshadowed with no ground flora/food plants present. Shallow – flat earth banks.
<b>Pond AZ</b>	<b>None</b>	Shallow – moderate earth banks. Some limited grasses present but generally poor suitability. No
<b>Pond BWP</b>	<b>None</b>	Heavily shaded and limited ground flora/food plants present. Shallow – moderate earth banks. Hemlock water-dropwort at western bank, rhododendron along eastern and south banks. Poor suitability.
<b>Ditch 1</b>	<b>None</b>	Dominated by reed canary grass
<b>Ditch 2</b>	<b>Field/Bank vole feeding remains</b>	Shallow -moderate steep earth banks. Grassland verge at banks tops providing suitable food plants including; yorkshire fog, nettle, red campion, cleavers, broad leaved dock, bindweed and reed canary grass. Himalayan balsam present along northern extent. Suitable habitat but no evidence of water vole presence. Field/bank vole feeding remains.
<b>Ditch 3</b>	<b>Field/Bank vole feeding remains and droppings</b>	Dominated by grasses including perennial ryegrass, false-oat grass, yorkshire fog, barren brome and reed canary grass. Cleavers, fox gloves, rosebay willowherb. Field/bank vole feeding remains and droppings along northern extent.
<b>Ditch 5</b>	<b>None</b>	Light flow of water running north to south. Ditch is overshadowed throughout with very limited ground flora/food plants present. Poor suitability. Locally abundant hemlock water-dropwort noted within depression. No mammal signs.
<b>Ditch 6</b>	<b>None</b>	Northern extent of Whittle Brook. Steep earth banks along northern extent before Booth's Wood, up to 2m high. Generally well vegetated with suitable grasses. No mammal signs observed. Himalayan balsam noted as occasional. Water depth to 100cm in places, with riffles and shallower water present at times.
<b>Ditch 7</b>	<b>None</b>	Moderate earth banks throughout this section of Whittle Brook. Well vegetated, although mostly bramble/scrub habitat with locally abundant areas of suitable vegetation. Himalayan balsam locally abundant to northern section of ditch. No evidence of mammals. Water depth up to 60cm in places. Riffles present at northern extent of ditch under tree canopy.
<b>Ditch 9</b>	<b>Field/Bank vole droppings and feeding remains</b>	Most suitable area of water vole habitat on site. Highly vegetated ditch, with tall grasses and variety of potential food plants. Some areas of very dense scrub present. Banks up to 1.5m high. Shallow water ~5cm present throughout, although choked by reed canary grass in areas. Field/bank vole droppings and feeding remains present along ditch.

SECTION	Field Sign	Plant species in feeding remains / Comments
<b>Ditch 10</b>	<b>None</b>	Moderate – steep earth banks. Largely overshadowed by trees within limited ground flora/feeding remains. Grasses at bank tops. Banks up to 2m high and water depth up to ~90cm in places. Largely pebbles and riffles present.
<b>Ditch 11</b>	<b>None</b>	Steep ditch with ~5cm water present. No flow. Banks up to 2m high and show signs of previous mechanical damage. Bank highly shaded with little ground flora/food plants present. Bank tops well vegetated. No signs of mammals.



**Table 2:** Water vole survey images

SECTION	Photograph / Description
<b>Pond A</b>	
<b>Pond B</b>	<p data-bbox="339 853 478 887">Rat burrow</p> 
<b>Pond G</b>	

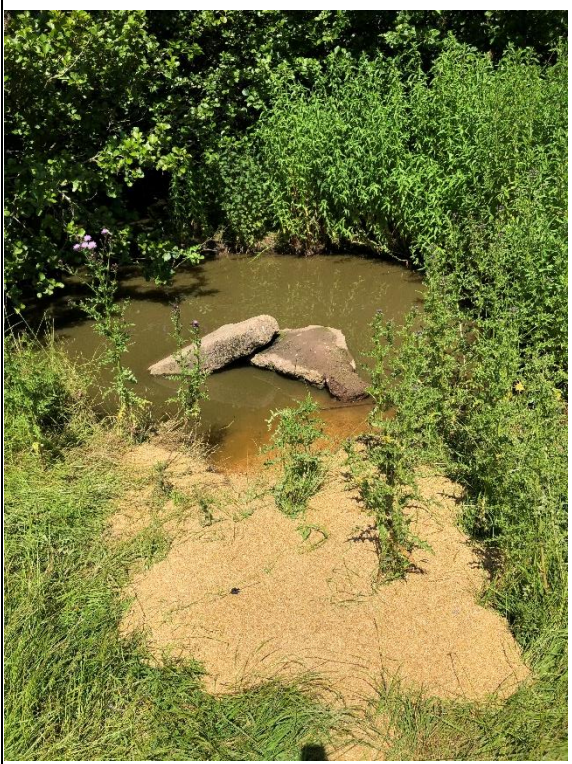
**SECTION**   **Photograph / Description**

**Pond I**



**Pond Ki**

Rat droppings within grain at pond edge





**SECTION** Photograph / Description

**Pond X**

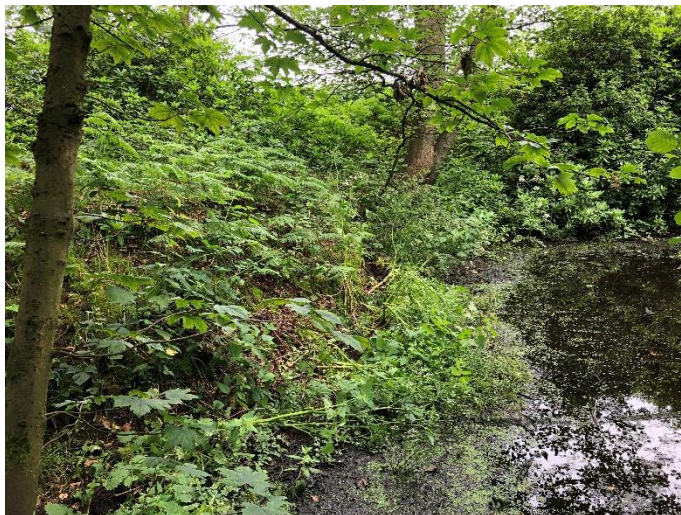


**Pond AZ**



**Pond BWP**

Hemlock water-dropwort at pond edge. Pond heavily shaded.





**SECTION**   **Photograph / Description**

**Ditch 2**   **Within ditch**



(below: field/bank vole feeding remains)



**Ditch 3**   **Field/bank vole feeding remains**





**SECTION**   **Photograph / Description**

Field/bank vole droppings and feeding remains



**Ditch 6**   Section of Ditch 6 with riffles



**SECTION** Photograph / Description

**Ditch 7**



**Ditch 9**

Field/bank vole feeding remains





**SECTION**   **Photograph / Description**



**Ditch 11**








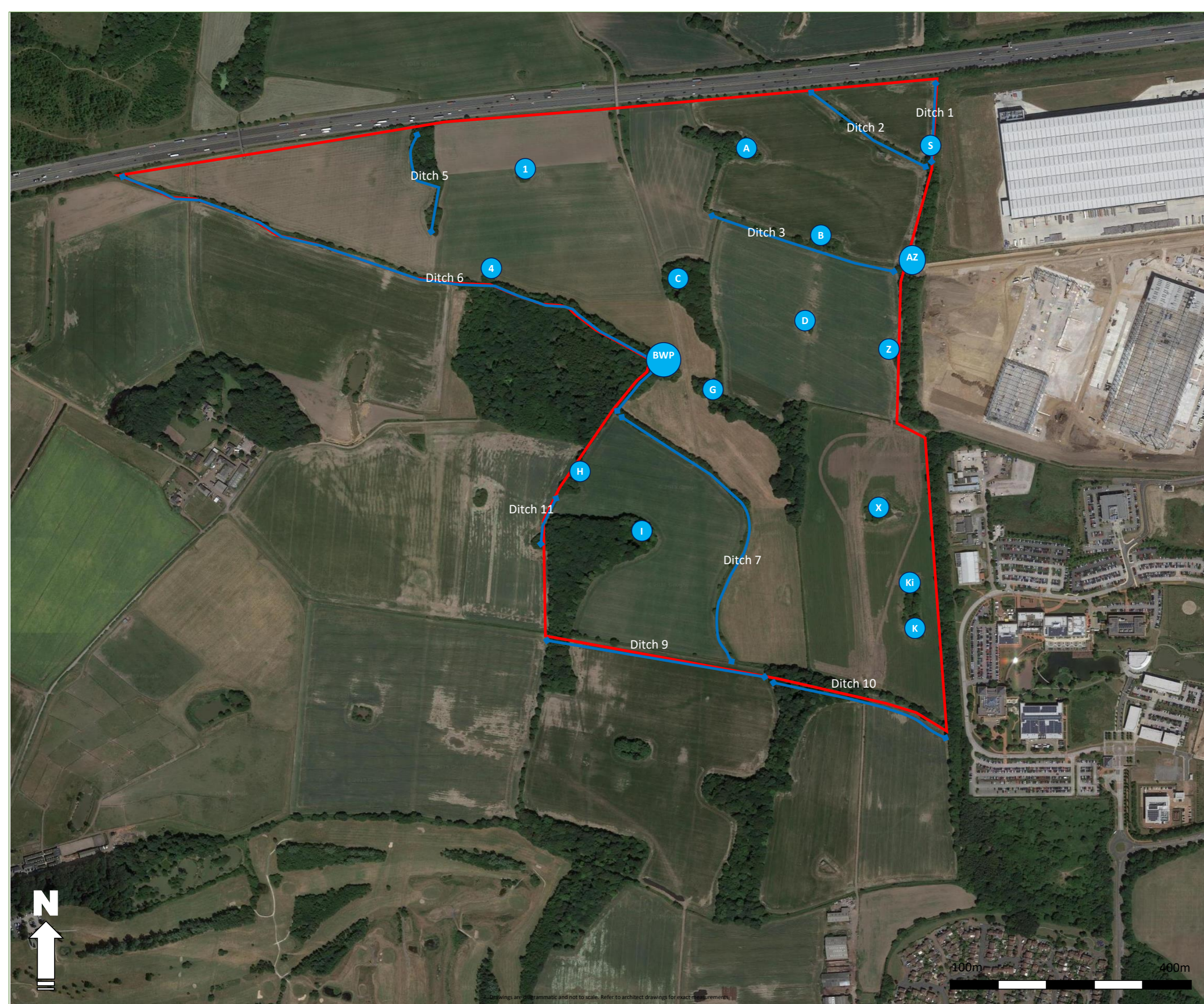
Figure 1

Water Vole Survey

Omega Zone 8, St Helens

Legend

-  Site Boundary
-  Ditches Surveyed
-  Ponds Surveyed



Drawing No.: 16903-01WVS\_A

Revision Dates			
A	B	C	D
24/10/2019			

the ecology Practice

0845 602 3822  
www.ecologypractice.co.uk



Drawings are diagrammatic and not to scale. Refer to architect drawings for exact measurements.